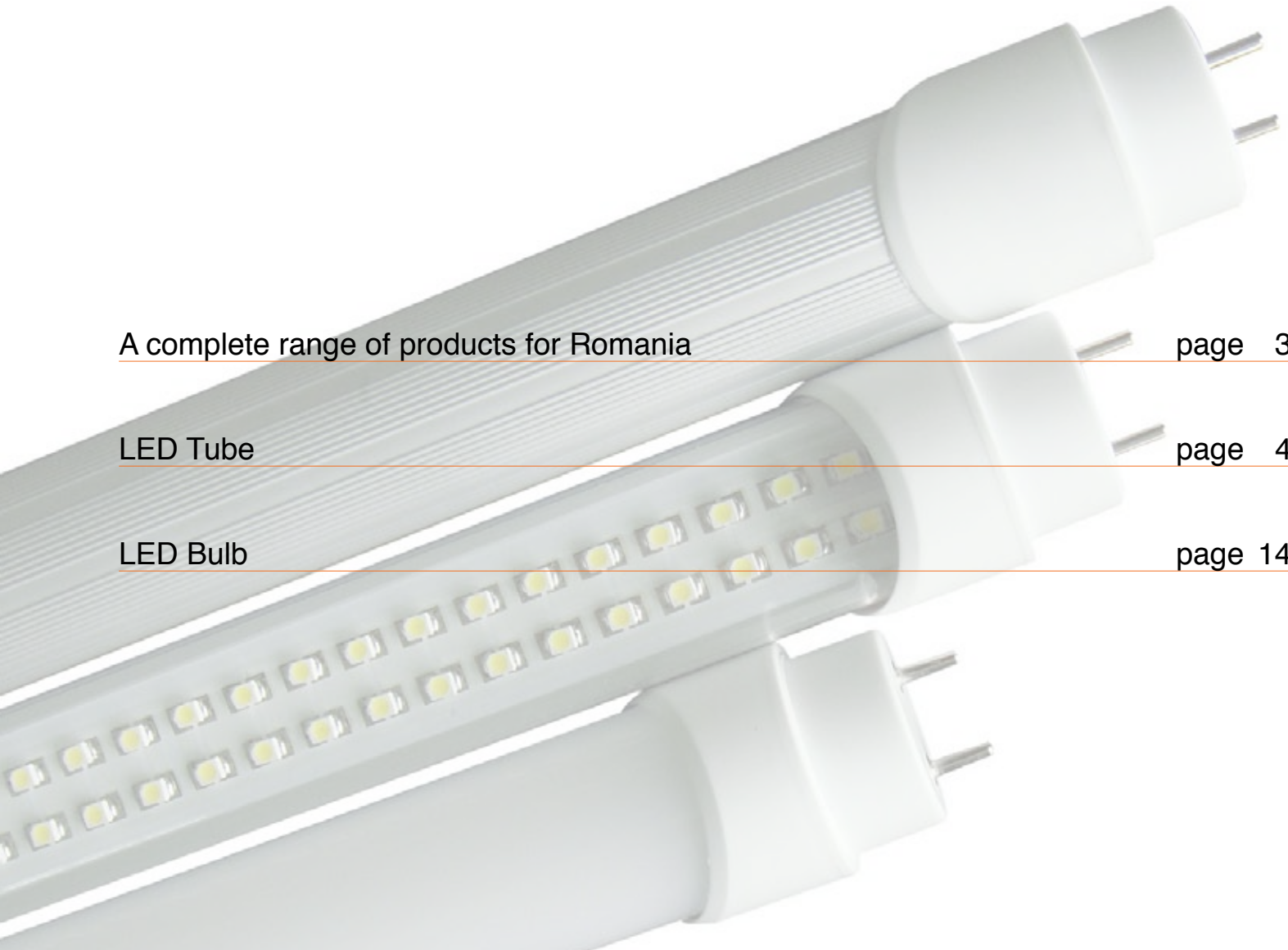


LED TECHNOLOGIES



Companies in strict accordance with the ISO9001:2008 quality system, some products has the TUV.UL.CE.SONCAP, CC and other international authoritative certification and national quality inspection certification, and the patents.

MINIMUM ORDER: 500 PCS. | DELIVERY: 45 DAYS | OTHER POWERS AND MODELS: ON REQUEST



A complete range of products for Romania

page 3

LED Tube

page 4

LED Bulb

page 14

A COMPLETE RANGE OF PRODUCTS FOR ROMANIA

ABOUT US

World Key Energy is a manufacturer of photovoltaic modules and solutions, founded by senior managers with extensive experience in the renewable energy sector, with a precise mission of opening the PV market in Romania and Eastern Europe. World Key Energy, thanks to its specific know-how, is able to anticipate the opportunities of the distribution market in Romania through a deep and continuous monitoring of changes in the needs of Distributors and regulations. World Key Energy believes in the coverage of the area to be developed through a broad panel of specialized and capillary Distributors and Retailers. For these reasons, World Key Energy is present in Romania in Timisoara with its own technical and commercial structure and logistics, where the product is always available for immediate delivery. The distribution in Romania is through the services of Dunca Expeditii.

OUR MISSION

Our main area is the distribution of solar modules and solar products for the high quality, which also support the development and management of projects (Large Plant and Equipment on Roofs) in the Romanian photovoltaic market. Through our engineers, we give the necessary assistance to foreign and local investors for feasibility studies and analysis of the area, the demand for all documents for the production of energy from part of the photovoltaic services, the organization and implementation of the project. The modules and photovoltaic solutions WKE World Key Energy are spread out all over Romania through agents, with a direct action of our technical staff. The

offer consist in conventional solar panels: monocrystalline and polycrystalline from 120 Wp to 310 Wp and complete the range with Family Solar photovoltaic kits from 3 kW to 9 kW, already configured with modules, inverters and facilities, ready for assembly by installers who are qualified and available in stock. We now add the Solar Pumps for use in agriculture, specific for irrigation.

DISTRIBUTION NETWORK

WKE World Key Energy wants to work in Romania with the distributors, operators in the sector: thermo-hydraulic systems retailers, electrical installers, large shopping centers. Through these relationships and deep experience in the local market of distributors of thermo-hydraulic systems, WKE World Key Energy has entered in the Romanian market.

WKE World Key Energy is able to support distribution through partnerships with AREL, the Association of electricians, who will support, with the quality of its technicians, installers and all customers for the installation of photovoltaic modules. World Key Energy has its own logistics office in Timisoara, and is able to distribute the products throughout Romania in 48/72 hours from receipt of order.



RESIDENTIAL



INDUSTRIAL



PHOTOVOLTAIC PARKS AND INVESTMENT



AGRICULTURE

WKE T8 LED PIR

1. Infrared controll, auto-adjust work status
2. Low power consumption in standby status, when people approach, adjust to full load 18w automaticly
3. Full load duration can be custmoized (2-60s)
4. Action sensitivity: 5-7m
5. Detection angle: 120°



Item No.	Body size (mm)	Led Q.ty	Input voltage (V)	Power (W)	Luminous Flux (Lm)		Color Temperature	Color Rendering	Power Factor	Emitting Angle
					Minimum	Maximum	Warm White/Natural White/Daylight/Cold white			
WKE-T8-06-IR	φ26*600	SMD3528/144	85-260	8	200	900	2700-7200K	>70Ra	0.92	155° -165°
WKE-T8-12-IR	φ26*1200	SMD3528/288	85-260	18	360	1800	2700-7200K	>70Ra	0.92	155°-165°
WKE-T8-15-IR	φ26*1500	SMD3528/320	85-260	22	400	2000	2700-7200K	>70Ra	0.92	155°-165°

WKE T5 INTEGRATED

1. Transparent strip cover or frosted cover
2. From 7W to 22W power
3. 85-260 Input Voltage



Item No.	Body size (mm)	Led Q.ty	Input voltage (V)	Power (W)	Luminous Flux (Lm)		Color Temperature	Color Rendering	Power Factor	Emitting Angle
					Transparent Strip cover	Frosted cover	Warm White/Natural White/Daylight/Cold white			
WKE-108-51206-AT	600	SMD3528/108	85-260V	7W	830	750	2700-7200K	>70Ra	0.92	155°-165°
WKE-144-51206-AT	600	SMD3528/144	85-260V	10W	1100	1000	2700-7200K	>70Ra	0.92	155°-165°
WKE-192-51209-AT	900	SMD3528/192	85-260V	14W	1450	1340	2700-7200K	>70Ra	0.92	155°-165°
WKE-168-51212-AT	1200	SMD3528/168	85-260V	13W	1250	1150	2700-7200K	>70Ra	0.92	155°-165°
WKE-288-51212-AT	1200	SMD3528/288	85-260V	20W	2200	2000	2700-7200K	>70Ra	0.92	155°-165°
WKE-324-51215-AT	1500	SMD3528/324	85-260V	22W	2450	2250	2700-7200K	>70Ra	0.92	155°-165°

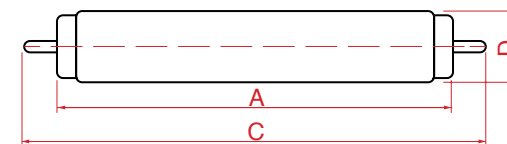
WKE T5

1. Transparent strip cover or frosted cover
2. From 7W to 22W power
3. 85-260 Input Voltage



Item No.	Body size (mm)	Led Q.ty	Input voltage (V)	Power (W)	Luminous Flux (Lm)		Color Temperature	Color Rendering	Power Factor	Emitting Angle
					Transparent Strip cover	Frosted cover	Warm White/Natural White/Daylight/Cold white			
WKE-108-51206-A	φ15*600	SMD3528/108	85-260V	7W	830	750	2700-7200K	>70Ra	0.92	155°-165°
WKE-144-51206-A	φ15*600	SMD3528/144	85-260V	10W	1100	1000	2700-7200K	>70Ra	0.92	155°-165°
WKE-192-51209-A	φ15*900	SMD3528/192	85-260V	14W	1450	1340	2700-7200K	>70Ra	0.92	155°-165°
WKE-168-51212-A	φ15*1200	SMD3528/168	85-260V	13W	1250	1150	2700-7200K	>70Ra	0.92	155°-165°
WKE-288-51212-A	φ15*1200	SMD3528/288	85-260V	20W	2200	2000	2700-7200K	>70Ra	0.92	155°-165°
WKE-324-51215-A	φ15*1500	SMD3528/324	85-260V	22W	2450	2250	2700-7200K	>70Ra	0.92	155°-165°

Product	Specification	Length (mm)		Base Specification
		A	C	
WKE-T5 LED Tube	0.6m	548	563	G5
WKE-T5 LED Tube	1.2m	1148	1162	G5
WKE-T5 LED Tube	1.5m	1148	1462	G5



WKE T8

1. Transparent strip cover or frosted cover
2. From 7W to 50W power
3. 85-260 Input Voltage



Item No.	Body size (mm)	Led Q.ty	Input voltage (V)	Power (W)	Luminous Flux (Lm)		Color Temperature	Color Rendering	Power Factor	Emitting Angle
					Transparent Strip cover	Frosted cover	Warm White/Natural White/Daylight/Cold white			
WKE-48-81206- A	φ26*600	SMD2323/48	85-260V	10W	1160	1030	2700-7200K	>80Ra	0.92	155°-165°
WKE-96-81212- A	φ26*1200	SMD2323/96	85-260V	19W	2380	2070	2700-7200K	>80Ra	0.92	155°-165°
WKE-108-81212- A	φ26*1200	SMD2323/108	85-260V	22W	2600	2330	2700-7200K	>80Ra	0.92	155°-165°
WKE-216-81224- A	φ26*2400	SMD2323/216	85-260V	43W	4870	4660	2700-7200K	>80Ra	0.92	155°-165°
WKE-96-81206- A	φ26*600	SMD3014/96	85-260V	8W	780	737	2700-7200K	>70Ra	0.92	155°-165°
WKE-108-81206- A	φ26*600	SMD3014/108	85-260V	10W	975	921	2700-7200K	>70Ra	0.92	155°-165°
WKE-168-81212- A	φ26*1200	SMD3014/168	85-260V	14W	1365	1289	2700-7200K	>70Ra	0.92	155°-165°
WKE-192-81212- A	φ26*1200	SMD3014/192	85-260V	16W	1560	1474	2700-7200K	>70Ra	0.92	155°-165°
WKE-216-81212- A	φ26*1200	SMD3014/216	85-260V	20W	1950	1842	2700-7200K	>70Ra	0.92	155°-165°
WKE-240-81215- A	φ26*1500	SMD3014/240	85-260V	22W	2146	2026	2700-7200K	>70Ra	0.92	155°-165°

Item No.	Body size (mm)	Led Q.ty	Input voltage (V)	Power (W)	Luminous Flux (Lm)		Color Temperature	Color Rendering	Power Factor	Emitting Angle
					Transparent Strip cover	Frosted cover	Warm White/Natural White/Daylight/Cold white			
WKE-120-81206-A	φ26*600	SMD3528/120	85-260V	9W	920	850	2700-7200K	>70Ra	0.92	155°-165°
WKE-144-81206-A	φ26*600	SMD3528/144	85-260V	10W	1100	1000	2700-7200K	>70Ra	0.92	155°-165°
WKE-180-81212- A	φ26*1200	SMD3528/180	85-260V	14W	1200	1100	2700-7200K	>70Ra	0.92	155°-165°
WKE-216-81209- A	φ26*900	SMD3528/216	85-260V	15W	1700	1500	2700-7200K	>70Ra	0.92	155°-165°
WKE-240-81212- A	φ26*1200	SMD3528/240	85-260V	17W	1900	1700	2700-7200K	>70Ra	0.92	155°-165°
WKE-288-81212- A	φ26*1200	SMD3528/288	85-260V	20W	2200	2000	2700-7200K	>70Ra	0.92	155°-165°
WKE-324-81212- A	φ26*1200	SMD3528/324	85-260V	22W	2450	2200	2700-7200K	>70Ra	0.92	155°-165°
WKE-276-81215- A	φ26*1500	SMD3528/276	85-260V	21W	2100	1900	2700-7200K	>70Ra	0.92	155°-165°
WKE-324-81215- A	φ26*1500	SMD3528/324	85-260V	23W	2500	2250	2700-7200K	>70Ra	0.92	155°-165°
WKE-360-81215- A	φ26*1500	SMD3528/360	85-260V	25W	2750	2500	2700-7200K	>70Ra	0.92	155°-165°
WKE-384-81212- A	φ26*1200	SMD3528/384	85-260V	29W	2950	2700	2700-7200K	>70Ra	0.92	155°-165°
WKE-434-81415- A	φ26*1500	SMD3528/434	85-260V	28W	2700	2500	2700-7200K	>70Ra	0.92	155°-165°
WKE-528-81224- A	φ26*2400	SMD3528/528	85-260V	37W	4050	3700	2700-7200K	>70Ra	0.92	155°-165°
WKE-648-81224- A	φ26*2400	SMD3528/648	85-260V	45W	5000	4500	2700-7200K	>70Ra	0.92	155°-165°
WKE-720-82424- A	φ26*2400	SMD3528/720	85-260V	50W	5500	5050	2700-7200K	>70Ra	0.92	155°-165°

WKE T5C

1. Transparent strip cover or frosted cover
2. From 7W to 20W power
3. 85-260 Input Voltage



Item No.	Body size (mm)	Led Q.ty	Input voltage (V)	Power (W)	Luminous Flux (Lm)		Color Temperature	Color Rendering	Power Factor	Emitting Angle
					Transparent Strip cover	Frosted cover	Warm White/Natural White/Daylight/Cold white			
WKE-108-52406-C	φ15*600	SMD3528/108	85-260V	7W	630	570	2700-7200K	>70Ra	0.92	155°-165°
WKE-144-52406-C	φ15*600	SMD3528/144	85-260V	10W	860	780	2700-7200K	>70Ra	0.92	155°-165°
WKE-168-52412-C	φ15*1200	SMD3528/168	85-260V	13W	1000	900	2700-7200K	>70Ra	0.92	155°-165°
WKE-288-52412-C	φ15*1200	SMD3528/288	85-260V	20W	1700	1550	2700-7200K	>70Ra	0.92	155°-165°

WKE T8 LED EMERGENCY

1. Apply to both general purpose lighting and emergency lighting.
2. DC 12V rechargeable batteries, last 24 hours.
3. Work as emergency lamp in case of power failure.
4. Unique circuit design, multiple protections included.



Item No.	Body size (mm)	Led Q.ty	Input voltage (V)	Power (W)	Luminous Flux (Lm)	Warm White/Natural	Color Rendering	Power Factor	Emitting Angle
						Warm White/Natural White/Daylight/Cold white			
WKE-T8-12-EM	φ26*1200	SMD3528/288	85-260V	18W	2000	2700-7200K	>70Ra	0.92	155°-165°

WKE T8 LED PIR EMERGENCY

1. Microwave control, auto-adjust work status
2. Low power consumption in standby status, when people approach, turn to full load working status 18w automatically
3. Full load duration can be customized(2-60s)
4. Action sensitivity > 7m



Item No.	Body size (mm)	Led Q.ty	Input voltage (V)	Power (W)	Luminous Flux (Lm)		Color Temperature	Color Rendering	Power Factor	Emitting Angle
					Minimum	Maximum	Warm White/Natural White/Daylight/Cold white			
WKE-T8-12-MW	φ26*1200	SMD3528/288	85-260V	18W	660	2000	2700-7200K	>70Ra	0.92	155°-165°

WKE T8 VOICE SENSOR

1. With voice sensor, adjust work status automatically
2. Low power consumption in standby status, when people approach, adjust to full load 18w automatically
3. Keep-on time >20 second (customized service available)
4. Stand-by Brightness: 10~30% (customized service available)



Item No.	Body size (mm)	Led Q.ty	Input voltage (V)	Power (W)	Luminous Flux (Lm)		Color Temperature	Color Rendering	Power Factor	Emitting Angle
					Minimum	Maximum	Warm White/Natural White/Daylight/Cold white			
WKE-T8-12-VC	φ26*1200	SMD3528/288	85-260V	18W	660	2000	2700-7200K	>70Ra	0.92	155°-165°

WKE WATERPROOF

1. Transparent strip cover or frosted cover
2. Waterproof Led light
3. 85-260 Input Voltage



Item No.	Body size (mm)	Led Q.ty	Input voltage (V)	Power (W)	Luminous Flux (Lm)		Color Temperature	Color Rendering	Power Factor	Emitting Angle
					Transparent Strip cover	Frosted cover	Warm White/Natural White/Daylight/Cold white			
WKE-288-81212-AW	φ26*1200	SMD3528/288	85-260V	20W	2000	1800	2700-7200K	>70Ra	0.92	155°-165°
WKE-300-81212-AW	φ26*1200	SMD3528/300	85-260V	20W	2100	1890	2700-7200K	>70Ra	0.92	155°-165°

WKE LED BULBS

WKE WORLD KEY ENERGY LED TECHNOLOGIES



LED BULBS



MINIMUM ORDER: 500 PCS. | DELIVERY: 45 DAYS | OTHER POWERS AND MODELS: ON REQUEST

WKE World Key Energy Srl - Office / Logistic: Dunca Expediții, Comuna Dumbrăvița
Judetul Timiș - DJ 691 Nr. Km 7 + 142 - Tel: 0040-256-373901 - www.worldkeyenergy.com

WKE LED BULBS

WKE WORLD KEY ENERGY LED TECHNOLOGIES



Model	Power	Dimension (mm)	Holder	Color	Voltage (V)	Color temperature (K)	Luminous Flux (Lm)
WKE-015	15x1W	φ98x190	E27	Silver	85-265	3000-7500	≈1350-1650
WKE-018	18x1W		E26 B22 E14				≈1620-1980



WKE-512B-7	7x1W	φ95xH130	E27	Silver	85-265	3000-7500	≈630-770
WKE-512B-9	9x1W		E26				≈810-990
WKE-512B-12	12x1W		B22 E14				≈1080-1320



WKE-A15-9	9x1W	φ78x150	E27	Silver	85-265	3000-7500	≈810-990
WKE-A15-12	12x1W		E26 B22 E14				≈1080-1320



WKE-A13	5x1W	φ60x110	E27 E26 B22 E14	Silver	85-265	3000-7500	≈450-550
---------	------	---------	--------------------------	--------	--------	-----------	----------

WKE LED BULBS

WKE WORLD KEY ENERGY LED TECHNOLOGIES



Model	Power	Dimension (mm)	Holder	Color	Voltage (V)	Color temperature (K)	Luminous Flux (Lm)
WKE-A11	5x1W	φ60x110	E27 E26 B22 E14	Silver	85-265	3000-7500	≈450-550



WKE-A10	3x1W	φ50x105	E27 E26 B22 E14	Silver	85-265	3000-7500	≈270-330
---------	------	---------	--------------------------	--------	--------	-----------	----------



WKE-N6	6x1W	φ60x110	E27 E26 B22 E14	Silver	85-265	3000-7500	≈540-660
--------	------	---------	--------------------------	--------	--------	-----------	----------



WKE-N7	7x1W	φ60x110	E27 E26 B22 E14	Silver	85-265	3000-7500	≈630-770
--------	------	---------	--------------------------	--------	--------	-----------	----------

WKE LED BULBS

WKE WORLD KEY ENERGY LED TECHNOLOGIES



Model	Power	Dimension (mm)	Holder	Color	Voltage (V)	Color temperature (K)	Luminous Flux (Lm)
WKE-N8	9x1W	φ95x145	E27 E26 B22 E14	Silver	85-265	3000-7500	≈810-990



WKE-6125	3x1W	φ60x86	E27 E26 B22 E14	Silver	85-265	3000-7500	≈270-330
----------	------	--------	--------------------------	--------	--------	-----------	----------



WKE-6135	5x1W	φ60x96	E27 E26 B22 E14	Silver	85-265	3000-7500	≈450-550
----------	------	--------	--------------------------	--------	--------	-----------	----------



WKE-6145	6x1W	φ60x106	E27 E26 B22 E14	Silver	85-265	3000-7500	≈540-660
----------	------	---------	--------------------------	--------	--------	-----------	----------



WKE WORLD KEY ENERGY

PHOTOVOLTAIC SOLUTIONS IN ROMANIA

WKE World Key Energy Srl - Office / Logistic: Dunca Expediții, Comuna Dumbrăvița
Judetul Timiș - DJ 691 Nr. Km 7 + 142 - Tel: 0040-256-373901 - www.worldkeyenergy.com

www.worldkeyenergy.com